

RMS Query

GJXDM Information Exchange Package
Documentation
Generated: July 27, 2006

Table of Contents

<u>TABLE OF CONTENTS</u>	2
<u>1. PURPOSE AND SCOPE</u>	4
1.1. Scope.....	4
1.2. Purpose:.....	4
<u>2. LIST OF ARTIFACTS</u>	4
<u>3. XML SCHEMAS</u>	4
<u>4. ADDITIONAL IEP PROVISIONS</u>	4
<u>4.1. Additional Property Definitions</u>	5
Document.....	5
Document Sections	5
Components	5
Elements	6
Document Local XML Types	11
Document Local XML Elements.....	11
<u>4.2. Minimal Properties Set</u>	13
<u>4.3. Additional Business Rules</u>	13
4.3.1. Description.....	13
4.3.2. Data Exchanges	13
<u>5. SAMPLES</u>	13
<u>6. DEVELOPMENT</u>	14
6.1. Participants	14
6.2. Process:.....	14
6.3. Development Artifacts:	14
6.3.1. Data Model Diagram	14
6.3.2. Source Documents	16
6.3.3. Revision History:.....	16
<u>7. TESTING AND CONFORMANCE</u>	16

8. FEEDBACK..... 16

1. Purpose and Scope

1.1. Scope

National

1.2. Purpose:

2. List of Artifacts

1. GJXDM Subschema
2. Extension Schema
3. Document Schema
4. XML Document Instance
5. Data Model Diagram
6. XMI Export
7. XML Mappings
8. GIEP Description

3. XML Schemas

GJXDM Version: 3.0.3

Schema Type	File Name
Subset Schema	RMS Query Schema Package\jxdm\3.0.3\jxdm.xsd
Extension Schema	RMS Query Schema Package\lt.xsd
Document Schema	RMS Query Schema Package\RMS Query.xsd

4. Additional IEP Provisions

4.1. Additional Property Definitions

Document

Name	Description
RMS Query	This permits a query based on person, location, object or Offense/Incident information. The query is highly structured to allow automated responses from queried systems.

Document Sections

Name	Description
Incident	
Location Based Query	
Organization	
Person	
Property Query	An item that has been recovered, stolen, destroyed, siezed, evidence, lost, safe keeping, etc.
Query Details	
Requesting Agency	An organization that requests emergency management resources from another agency - usually as part of a mutual aid agreement.
Requesting Person	A person authorized to either request emergency management resources or perform cross-system queries on the behalf of their organization

Components

Name	Description
Address	
Contact	
Data Location	Indicates the agency and/or the data source to query. Multiple destinations and/or sources may be indicated. The proximity elements permit a query of the agencies and jurisdictions that exist within a certain proximity of the destination location. For example this would allow the user to query the Chicago PD RMS as well as those systems in the counties surrounding Chicago. Additionally, this would allow to query all agencies within proximity to the originating agency by indicating the originating agency as the destination location.
Firearm	
Incident Details	
Intersection Street	Could be a common intersection of a street or an on/off ramp.

RMS Query Information Exchange Package Definition

Name	Description
Involvement	Describes the involvement of a person or an object to a particular record. (e.g. parolee, victim, witness, stolen, recovered, lost)
Issued ID	
Justice Person Identifiers	The attorney's unique identifier. Assigned by a state or bar association to an attorney authorized to practice law.
Location Coordinates	
Location Range	
Login	This is the login to the remote system and may also be captured in the XML Message Envelope.
Modus Operandi	
Name	
Object Identifier	
Organization Identifiers	
Other Location Parameters	
Person Identifier	
Physical Characteristics	Identify scars, marks, tatoos and other distinguishing physical characteristics. This can include missing limbs, large ears, etc.
Physical Description	
Physical Description Range	When used in conjunction with a query, the elements in this component captures the min and max range of the age, height or range of a person.
Query Parameters	
Registration	Registration information for any form of conveyance. This would include airplanes, boats, automobiles, etc.
Transaction Defaults	Fields to be populated by the system.
Vehicle Identification	
Vehicle Model Year Range	When used in conjunction with a query, the elements in this component captures the min and max range of the vehicle model year.

Elements

Name	Description
Address Type	Block address, common place or intersection.
Age Max	The maximum age in a range of possible ages.
Age Min	May either indicate the precise age of a person (if it is known), or the minimum age in a range of possible ages.
Altitude	The altitude measure of the location.
Altitude Reference Point	e.g. ground level, sea level.
Altitude Unit of Measure	The units of measure for the altitude (e.g. feet, miles, meters)
Area Code	Number Plan Area
Barrel Length	Length of the barrel in which the projectile passes and is affected by rifling
Brand Text	Text identifying the manufacturer of an item.

RMS Query Information Exchange Package Definition

Name	Description
Building Designation	The name or number of a building.
CMV Weight	
Caliber Text	The diameter of the bore before the rifling grooves are cut.
Commercial Identifier	
Commercial Identifier Type	
Common Place Name	e.g. Mall, Washington Monument, Arlington Cemetary, Central Park.
Coordinate Date	Date that the coordinates were recorded by the device in UTC.
Coordinate Time	Time that the coordinates were recorded by the device in UTC.
Country Code	
County Code	
Data Sources	Listing of the databases to query (e.g. Inmate, Parolee, Alerts, Arrests, Warrants, Vehicle Registration, Drivers License)
Date of Birth	
Datum	<p>Indicates the Lat/Long system, UTM and projection year. Need to research what NENA standard specifies for preferred Coordinate System to use.</p> <p>Specifies the map projection and coordinate system recommended for the display of logitude and latitude coordinates.</p>
Description Text	e.g. clothing
E-Mail	
Employee Identifier	
Employment Position Name	
Exchange Date	
Exchange Time	
Expiration Date	
Eye Color Code	
FBI Number	
Finish Code	Type of finish on the weapon (e.g. Blue, Nickel, Stainless steel)
Firearm Manufacturer	Manufacturer of the item based on the 3-letter NCIC manufacturer code list.
Firearm Model Text	Test field that indicates the model of the firearm.
Firearm Type	Specific type of firearm used (e.g. handgun, submachine gun, rifle, shotgun)
First Name	
Floor Identifier	
Full Name	
Gauge Text	The size of the bore of a shotgun.
Hair Color Code	
Height Max	
Height Min	May either indicate the precise height of a person (if it is known), or the minimum height in a range of possible heights.

RMS Query Information Exchange Package Definition

Name	Description
ID Number	Unique identifier assigned by the issuing organization.
ID Number Type	The identification type (e.g. passport, driver's license, military ID, state issued identification).
Identifier Type Code	Indicates the type of identifier (e.g. badge number, employee ID, BAR number)
Incident Description Text	
Incident ID	Unique identifier for this incident on the originating CAD.
Incident Type Code	
Involvement Description	Describes the relationship between an organization and an event
Issuing Authority	The state or other issuing authority (e.g. DOD) from which a form of identification was issued.
Issuing Country	Indicates the country that the identification was issued from.
Last Name	
Latitude Degree	
Latitude Minute	
Latitude Second	
Local Person Identifier	e.g. Master Name Index identifier
Location Description	e.g. may indicate mile marker.
Longitude Degree	
Longitude Minute	
Longitude Second	
MO Category	A coded representation describing a pattern of behavior by a subject at a crime scene. Examples include victim gender, writing/drawing at scene, type of restraints on victim, property damaged. See http://criminaljustice.state.ny.us/dict/dataelement271.htm for other examples.
MO Description	
MO Subcategory	A coded representation detailing the MO category. Examples include male or female (Victim gender), Knife, blood, paint, lipstick (writing/drawing at scene). See http://criminaljustice.state.ny.us/dict/dataelement271.htm for other examples.
Make Code	
Mark Description	
Mark Type	
Message ID	The local ID that matches the response to the request.
Message Key	Indicates the specific kind of service being requested. Usually agreed upon by the various interfaces.
Middle Name	
Mile Post Max	
Mile Post Min	
Model Code	
Model Year Max	Used in conjunction with Model Year Min when querying vehicle information based on a range

RMS Query Information Exchange Package Definition

Name	Description
	of dates.
Model Year Min	A year which is assigned to a vehicle by the manufacturer. May be used individually if indicating the vehicle model year or in conjunction with Model Year Max if this is used as part of a vehicle model year query.
Municipality Name	
Name Suffix	
Narcotics Type Code	
Offense Type Code	The records management incident type code.
Offense Type Code Type	e.g. NCIC, UCR, NIBRS
Organization Name	<p>The name of the dispatch requesting agency (typically an alarm central station) or the responding agency (typically a police or fire department or central dispatch point) or responder.</p> <p>Organization Name has to be unique across all requestors and responders if we want to use it as an identifier. Otherwise a separate Organization Id will have to be used.</p>
Organization Type	Examples include business, criminal organization, terrorist organization
P.O. Box	
Plate Issuing Authority	
Plate Number	May be complete or partial
Plate Type	e.g. temporary plates, manufacturer, tail number, dealer plates, hull number.
Postal Code	
Premises Type Code	e.g. pharmacy, open area, single family home, restaurant, etc. May be based on UCR/NIBRS.
Primary Color Description Text	
Property ID	Alphanumeric unique identifier
Property ID Type Code	Indicates the property id type. e.g. Serial Number, Owner applied number
Property Type	e.g. vehicle, currency, electronics, narcotics
Proximity Measure	A numeric value that designates a certain proximity to a query destination.
Proximity Measure Type	Identifies the type of the measure (e.g. county, miles, feet).
Query Destination	The agency or jurisdiction to query.
Query Type	Query types consist of person, location, object, organization, and offense.
Race Code	
Record Begin Date	Query parameter that specifies to only include records created after the indicated date.
Record Begin Time	Query parameter that specifies to only include records created after the indicated time.
Record End Date	Query parameter that specifies to only include records created before the indicated date.
Record End Time	Query parameter that specifies to only include records created before the indicated time.
Response Type	. Match Only (return matched records

RMS Query Information Exchange Package Definition

Name	Description
	<p>with key identifiers and the search elements. These key identifiers are specified in the response documentation).</p> <ul style="list-style-type: none"> · Summary (return everything in match only and associated summary records such as warrants, alerts, and protection orders). · Full (return all details).
Room Number Text	Free form text field describing a location e.g. apartment 218, Suite 312.
Score Threshold Min	Based on scoring for the response the minimum match parameters that will be returned.
Sex	
Social Security Number	
Soundex Query Code	Indicates the query elements that should be searched using soundex.
State Code	
State ID Number	
Street Name	The address of the site.
Street Number Max	
Street Number Min	
Street Post Directional	
Street Pre Directional	
Street Type	e.g. Ave., St., Blvd.
Subdivision Name	Formal or informal name given to a residential or commercial area. (e.g. Downtown Business District, LoDo)
Submission Date	
Submission Time	
Subscriber ID	Last 4 digits of a phone number.
Telephone City Code	
Telephone Country Code	
Telephone Number Extension	
Telephone Number Type	Cell Phone, Fax, Land Line etc
Telephone Prefix	AKA NXX Refers to the exchange which is the three digits following the area code
Terminal ID	Uniquely identifies a computer terminal device.
User ID	Plain or encrypted text that contains user id information for a user attempting to perform cross-system queries.
User Password	Plain or encrypted text that contains password information for a user attempting to perform cross-system queries. (TextType)
Vehicle Classification	
Vehicle Description	This may indicate the type of vehicle (e.g. airplane, truck, car, boat).
Vehicle Identification Number	
Vehicle Secondary Color Code	

Name	Description
Vehicle Style Code	
Web Address	
Weight Max	
Weight Min	May either indicate the precise weight of a person (if it is known), or the minimum weight in a range of possible weights.

Document Local XML Types

Name	Description
EMContactRoleCodeSimpleType	
IncidentType (IncidentType)	
LocationRangeType (SuperType)	
LocationType (LocationType)	
OrganizationType (OrganizationType)	
PersonType (PersonType)	
PropertyQueryType (SuperType)	
QueryParametersType (SuperType)	
RequestQueryTransactionType (ActivityType)	
ResourceRequestPersonType (PersonType)	A structure containing elements relating to the person authorized to either request emergency management resources or perform cross-system queries on the behalf of their organization
ResourceComponentCapabilityTypeCodeSimpleType	
VehicleType (VehicleType)	

Document Local XML Elements

Name	Description
DataSourcesText (TextType)	Listing of the databases to query (e.g. Inmate, Parolee, Alerts, Arrests, Warrants, Vehicle Registration, Drivers License)
Incident (IncidentType)	
Location (LocationType)	Details about a physical location.
LocationRange (LocationRangeType)	Query parameters based on a range (e.g. min and max)
MOCategoryText (TextType)	A coded representation describing a pattern of behavior by a subject at a crime scene. Examples include victim gender, writing/drawing at scene, type of restraints on victim, property damaged. See http://criminaljustice.state.ny.us/dict/dataelement271.htm for other examples.
MOSubcategoryText (TextType)	A coded representation detailing the MO category. Examples include male or female (Victim gender), Knife, blood, paint, lipstick (writing/drawing at scene). See http://criminaljustice.state.ny.us/dict/dataelement271.htm for other examples.
MilePostRange (RangeMeasureType)	Specifies a range between two mile posts on a

RMS Query Information Exchange Package Definition

Name	Description
	highway.
OffenseTypeCode (TextType)	The records management incident type code.
OffenseTypeCodeType (TextType)	The offense code type that has been used to describe the incident e.g. NCIC, UCR, NIBRS
Organization (OrganizationType)	Details about a unit which conducts some sort of business or operations.
OrganizationInvolvementText (TextType)	Describes the relationship between an organization and an event
Person (PersonType)	Describes inherent and frequently associated characteristics of a person.
PersonInvolvementText (TextType)	Describes the relationship between a person and an event
PremisesTypeCodeText (TextType)	Description of the building e.g. pharmacy, open area, single family home, restaurant, etc. May be based on UCR/NIBRS.
PropertyInvolvementText (TextType)	Describes the relationship between property and an event (TextType)
PropertyQuery (PropertyQueryType)	Query on an object or other property such as a firearm, vehicle, or other property.
ProximityMeasure (MeasureType)	
QueryDestinationText (TextType)	The agency or jurisdiction to query.
QueryParameters (QueryParametersType)	Metadata and other criteria for execution of a cross-RMS query.
QueryRecordBeginDate	Query parameter that specifies to only include records created after the indicated date.
QueryRecordBeginTime	Query parameter that specifies to only include records created after the indicated time.
QueryRecordEndDate	Query parameter that specifies to only include records created before the indicated date.
QueryRecordEndTime	Query parameter that specifies to only include records created before the indicated time.
QueryResponseTypeText (TextType)	<p>* Match Only (return matched records with key identifiers and the search elements. These key identifiers are specified in the response documentation).</p> <p>* Summary (return everything in match only and associated summary records such as warrants, alerts, and protection orders).</p> <p>* Full (return all details).</p>
QueryScoreThresholdMinValue	Based on scoring for the response the minimum match parameters that will be returned
QuerySoundexQueryCodeText (TextType)	Indicates the query elements that should be searched using soundex.
QueryTypeText (TextType)	Query types consist of person, location, object, organization, and offense.
RequestQueryTransaction (RequestQueryTransactionType)	Details about an request for information.
ResourceRequestPerson	A person authorized to either request

Name	Description
(ResourceRequestPersonType)	emergency management resources or perform cross-system queries on the behalf of their organization
ResourceRequestingOrganization (OrganizationType)	An organization that requests emergency management resources from another agency - usually as part of a mutual aid agreement.
StreetNumberRange (RangeMeasureType)	Describes a min and a max street number range
TerminalID (IDType)	Uniquely identifies a terminal device.
UserPasswordText (TextType)	Plain or encrypted text that contains password information for a user attempting to perform cross-system queries.
Vehicle (VehicleType)	Details about a motor-driven conveyance designed to carry its operator, passengers, and cargo, including trailers, and excepting boats.
VehicleModelYearRange (RangeMeasureType)	When used in conjunction with a query, the elements in this component captures the min and max range of the model year.

4.2. Minimal Properties Set

4.3. Additional Business Rules

4.3.1. Description

The model was designed with the assumption that the conditions specified by elements the same section (e.g. Person, Object, Location) must all be met to include a report in the result set. Element criteria specified in difference sections should be joined with an 'OR'. For example, if Person Last Name and Person Social Security Number are both identified, the query should assume that both criteria must be met to return a result set. If Person Social Security Number and Incident Number are indicated then the query should return items that meet either condition.

6. Development

6.1. Participants

Aaron Gorell-URL Integration-Consultant
Dominique Caspers-URL Integration-Consultant
Suzette McLeod-IJIS Institute-IJIS
Christine Spoon (was Mgarner)-Sungard OSSI-Industry
Neil Kurlander-Asynchrony Solutions-Industry
Steve Barger-Intergraph Corporations-Industry
Steve Hoggard-Spillman-Industry
Tom Dewey-Advanced Justice Systems-Industry
Vincent Tortoreillo-Enforsys, Inc.-Industry
Dave Mulholland-Commander, IT & Communications United States Park Police D.C.-
LEITSC
Gary Vest-Chief of police, Powell (OH) Police Department-LEITSC
Jim Slater -Chief Information Officer, Massachusetts Executive Office of Public Safety-
LEITSC
Mike Haslip -Chief of Police, Blaine (WA) Police Department-LEITSC
Bill Cade-APCO-APCO
Martin Moody-APCO-APCO
Heather Ruzbasan-IACP-LEITSC
Matt Snyder-IACP-LEITSC

6.2. Process:

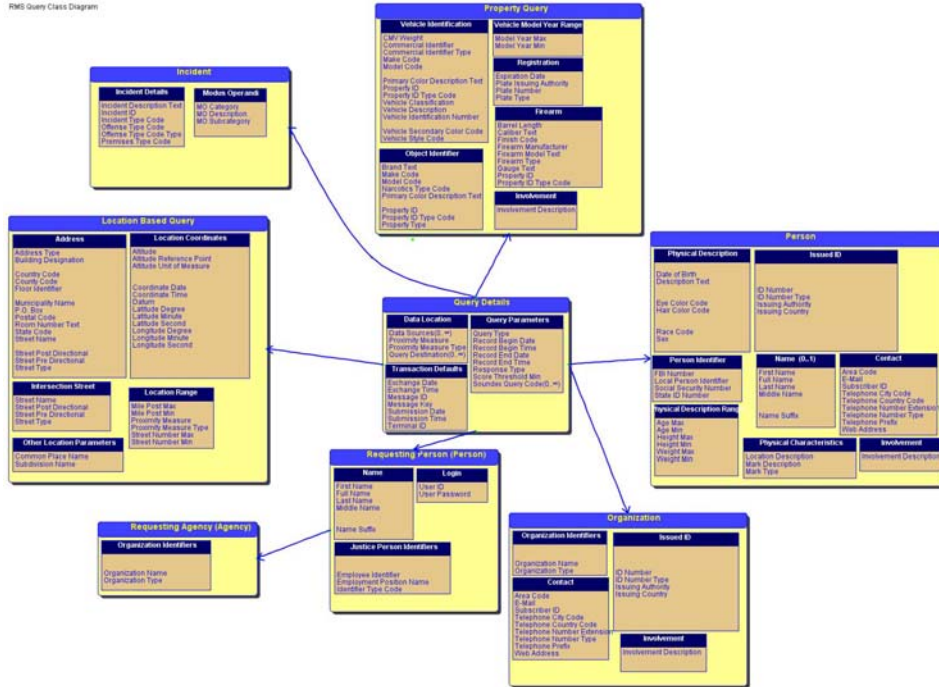
This IEPD modeled during a series of sessions that focused on defining the scope of RMS related exchanges using the JIEM Exchange Modeling process. This discussion was followed-up with identification of the elements that would be required for each document identified during exchange modeling. These data requirements were documented using a domain model. The RMS group met once in Las Vegas, NM on April 11, 2006.

6.3. Development Artifacts:

6.3.1. Data Model Diagram

RMS Query Information Exchange Package Definition

RMS Query Class Diagram



6.3.2. Source Documents

6.3.3. Revision History:

7. Testing and Conformance

8. Feedback